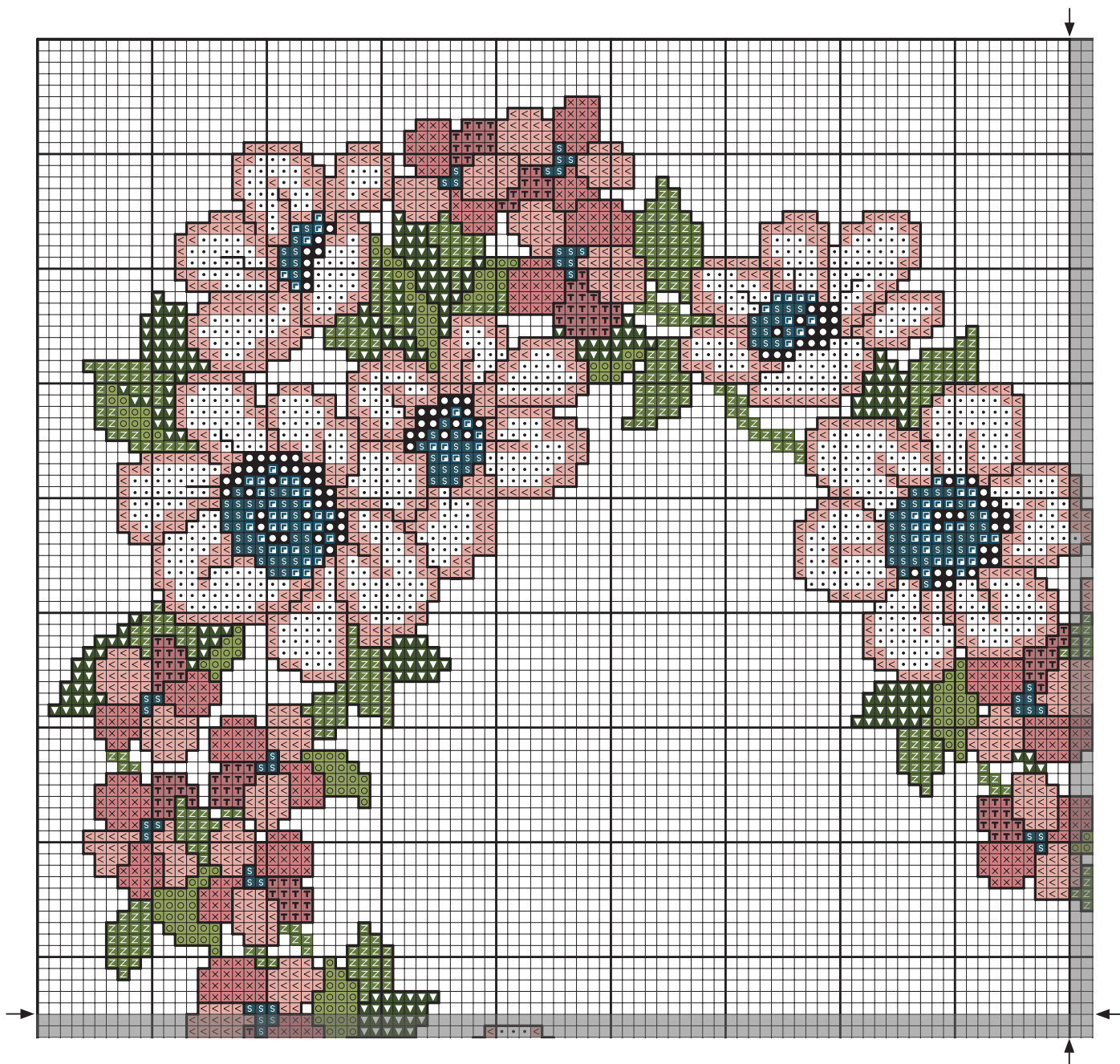


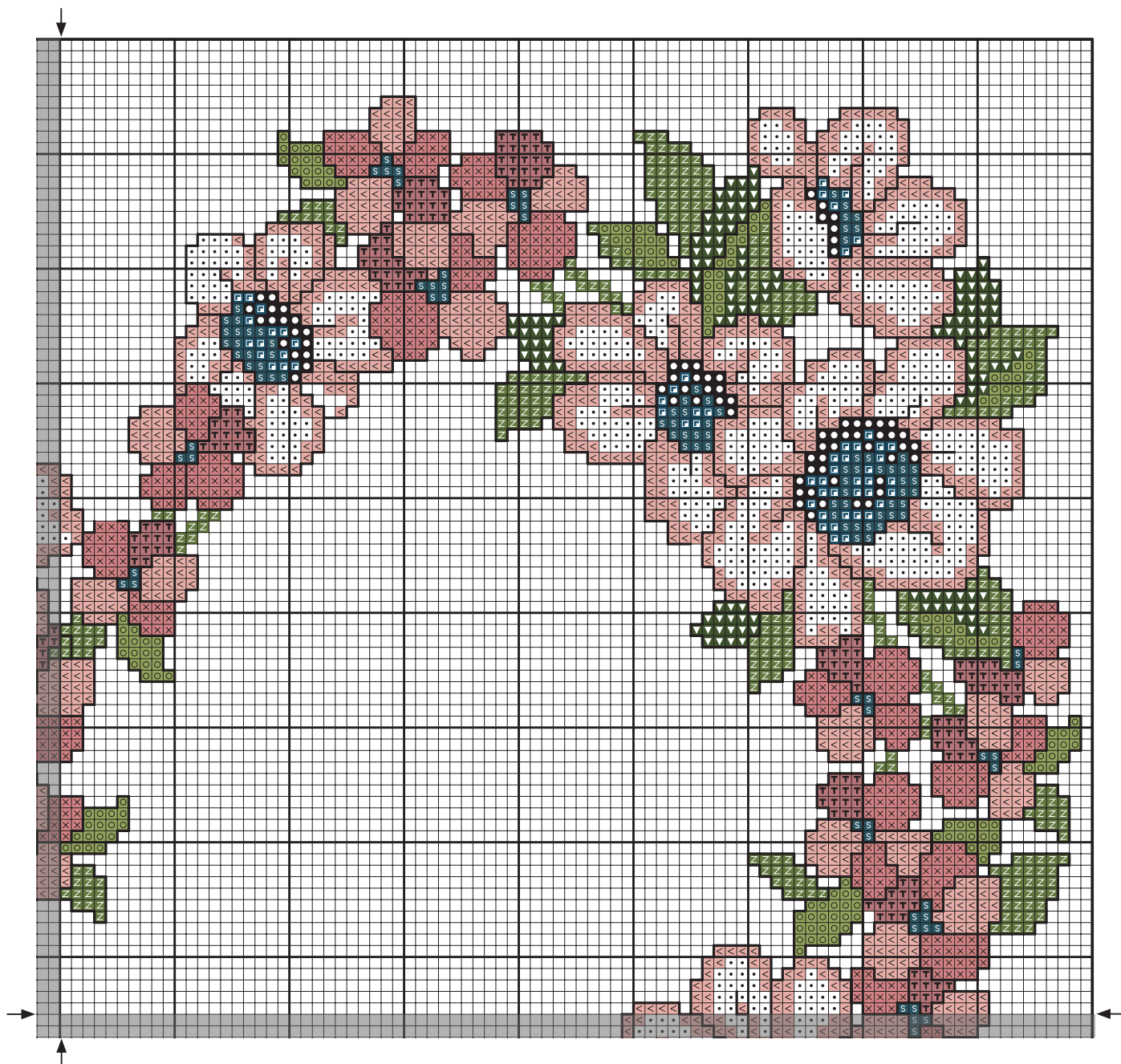
Floral Heart / Coeur floral

Coloured Cross Stitch Chart with Backstitch



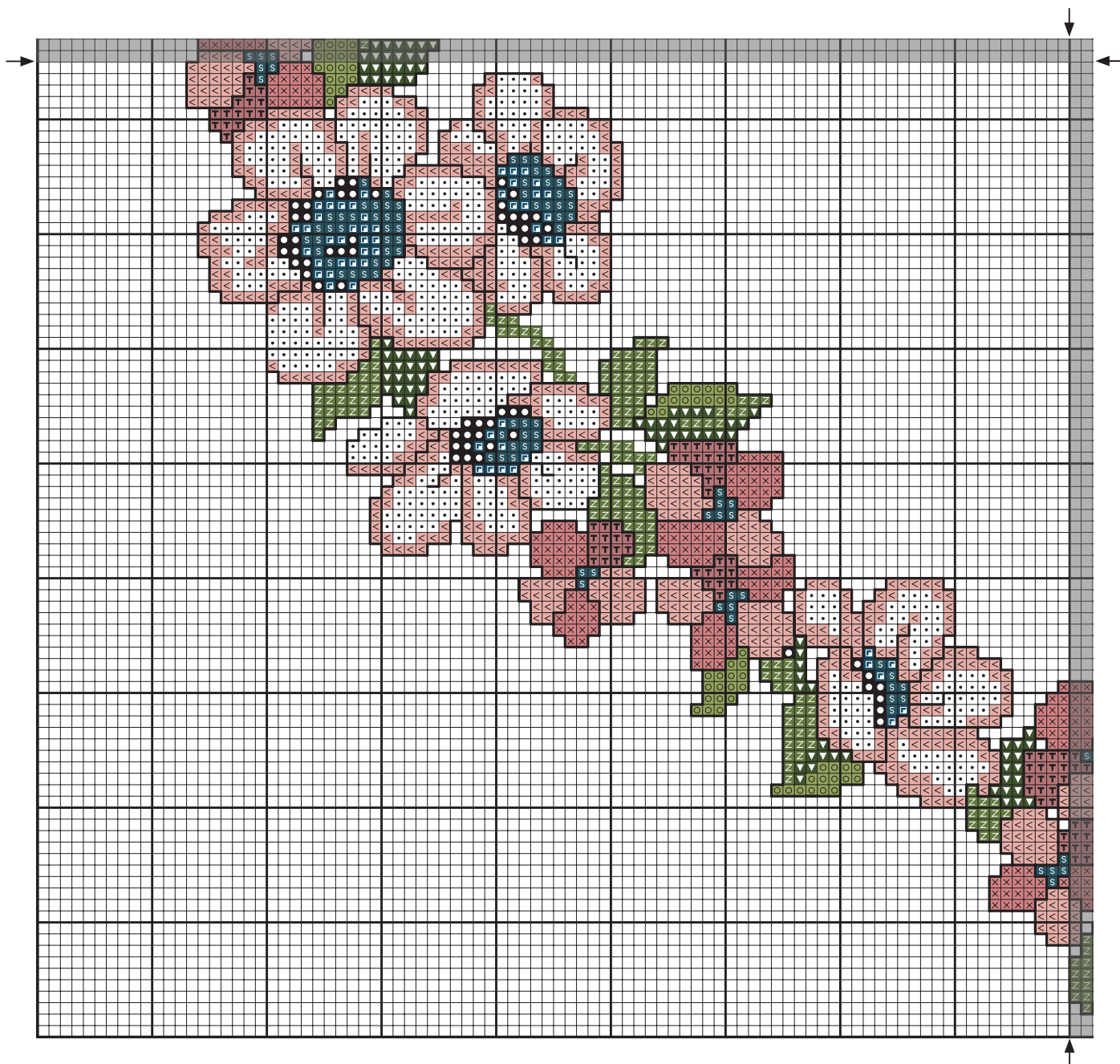
Floral Heart / Coeur floral

Coloured Cross Stitch Chart with Backstitch



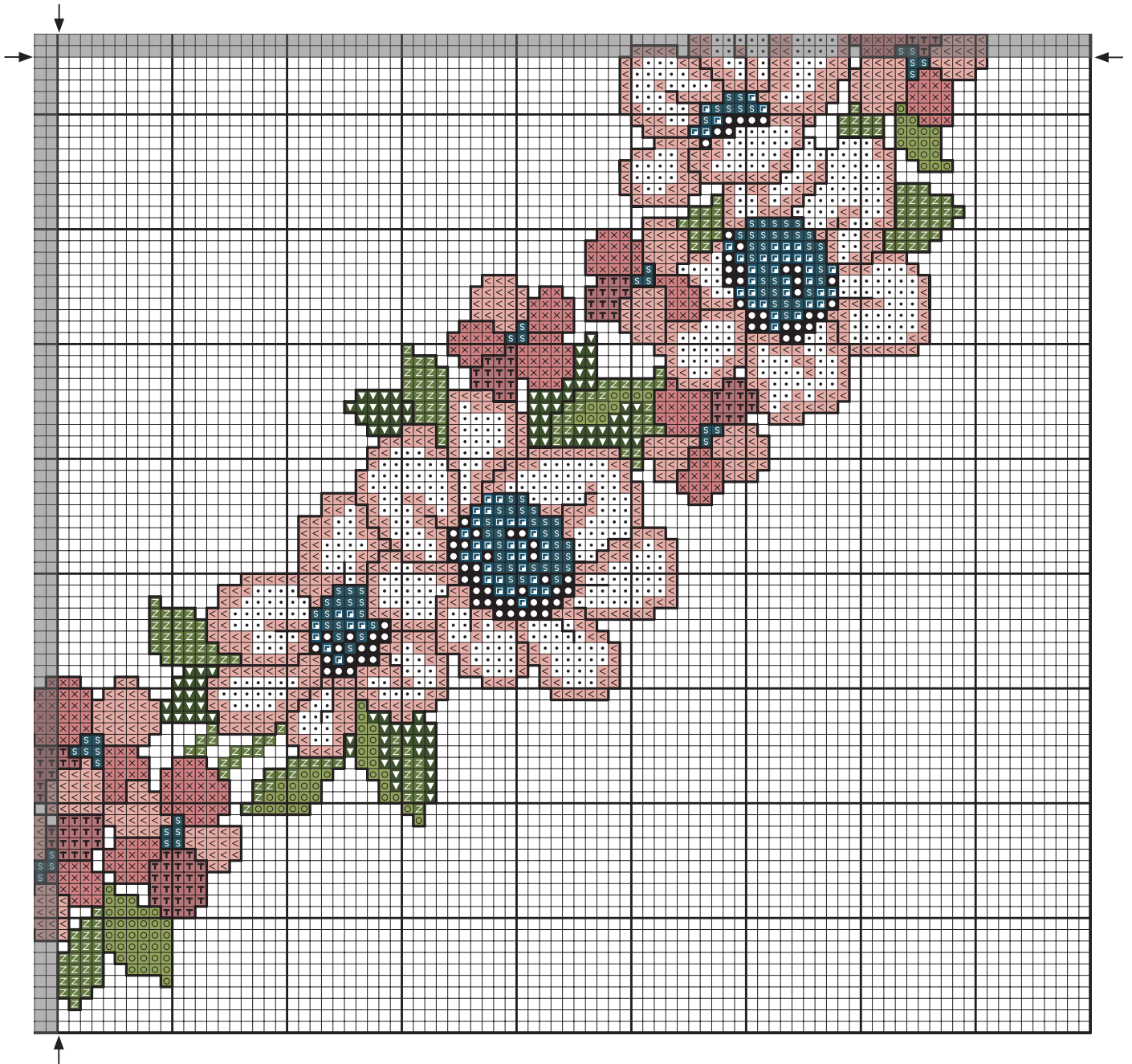
Floral Heart / Coeur floral

Coloured Cross Stitch Chart with Backstitch



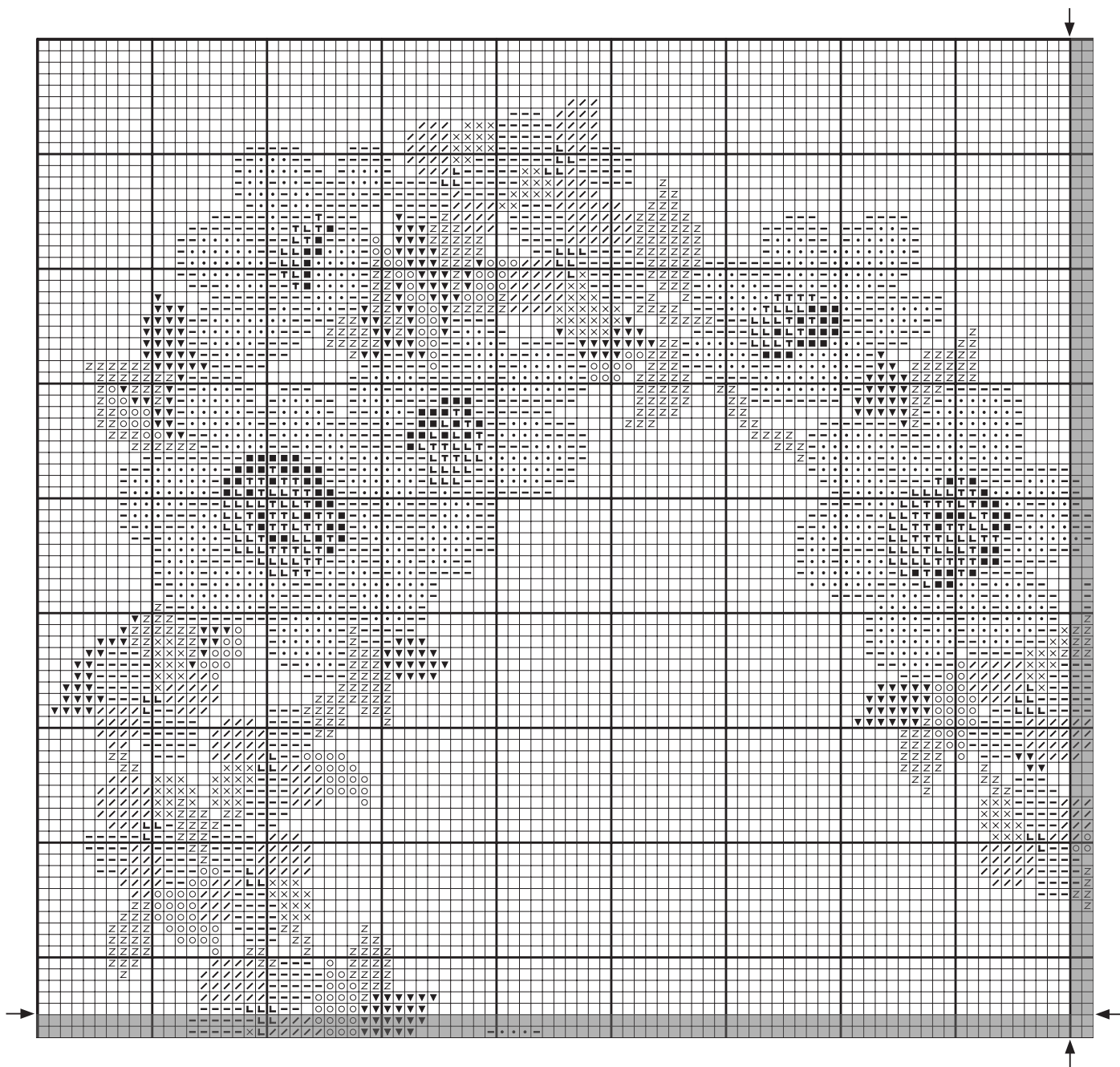
Floral Heart / Coeur floral

Coloured Cross Stitch Chart with Backstitch



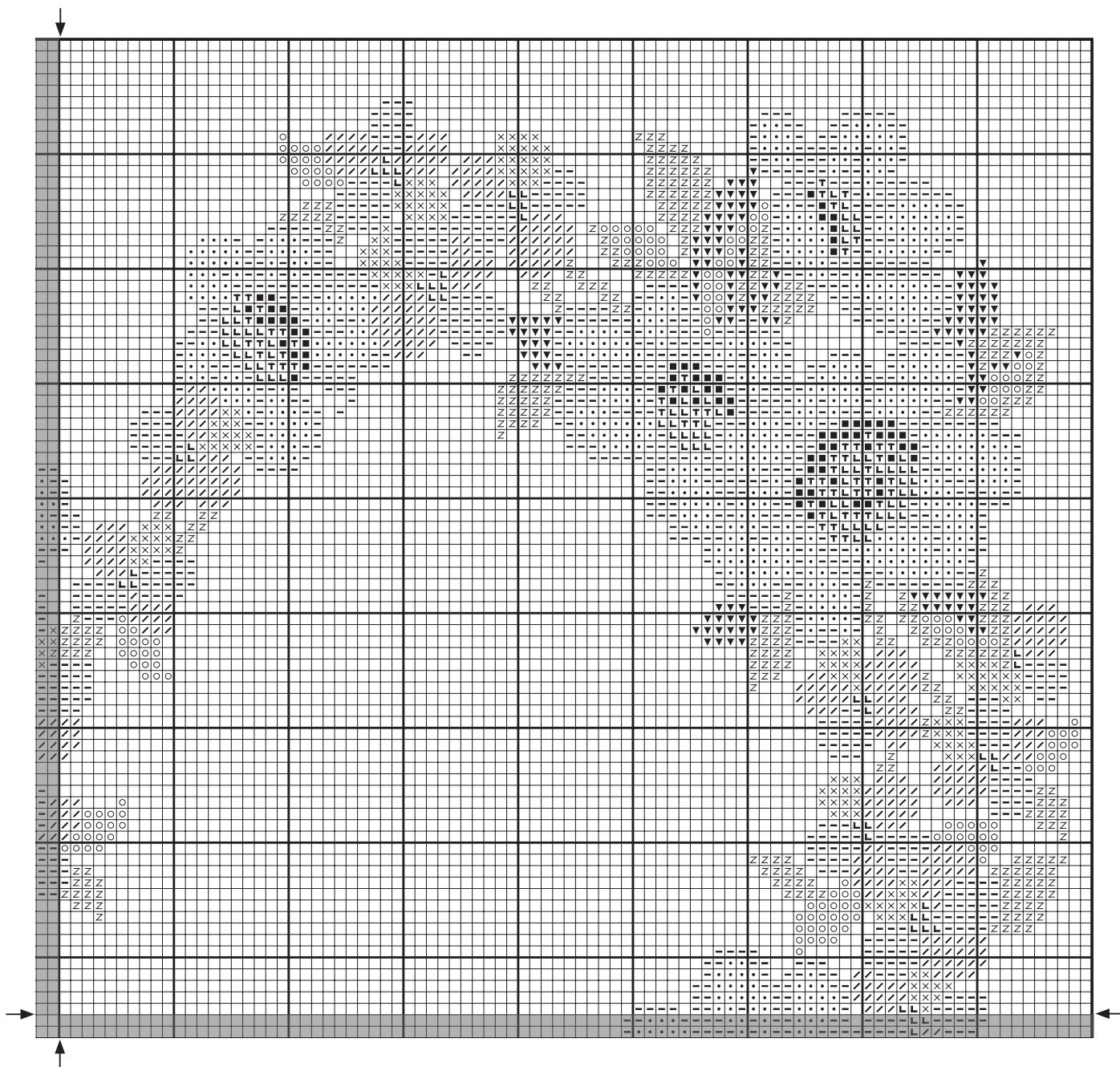
Floral Heart / Coeur floral

Cross Stitch Chart



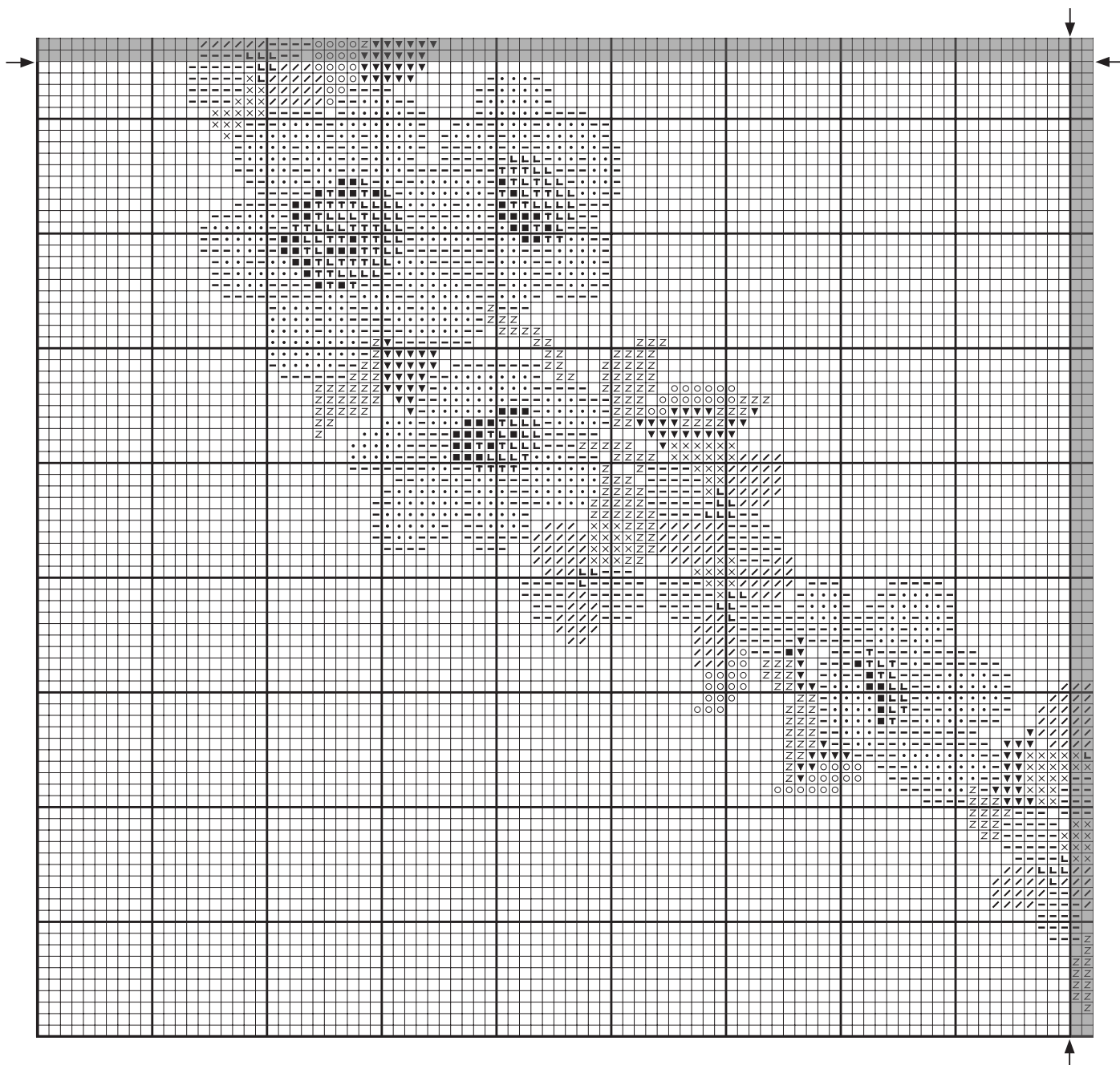
Floral Heart / Coeur floral

Cross Stitch Chart



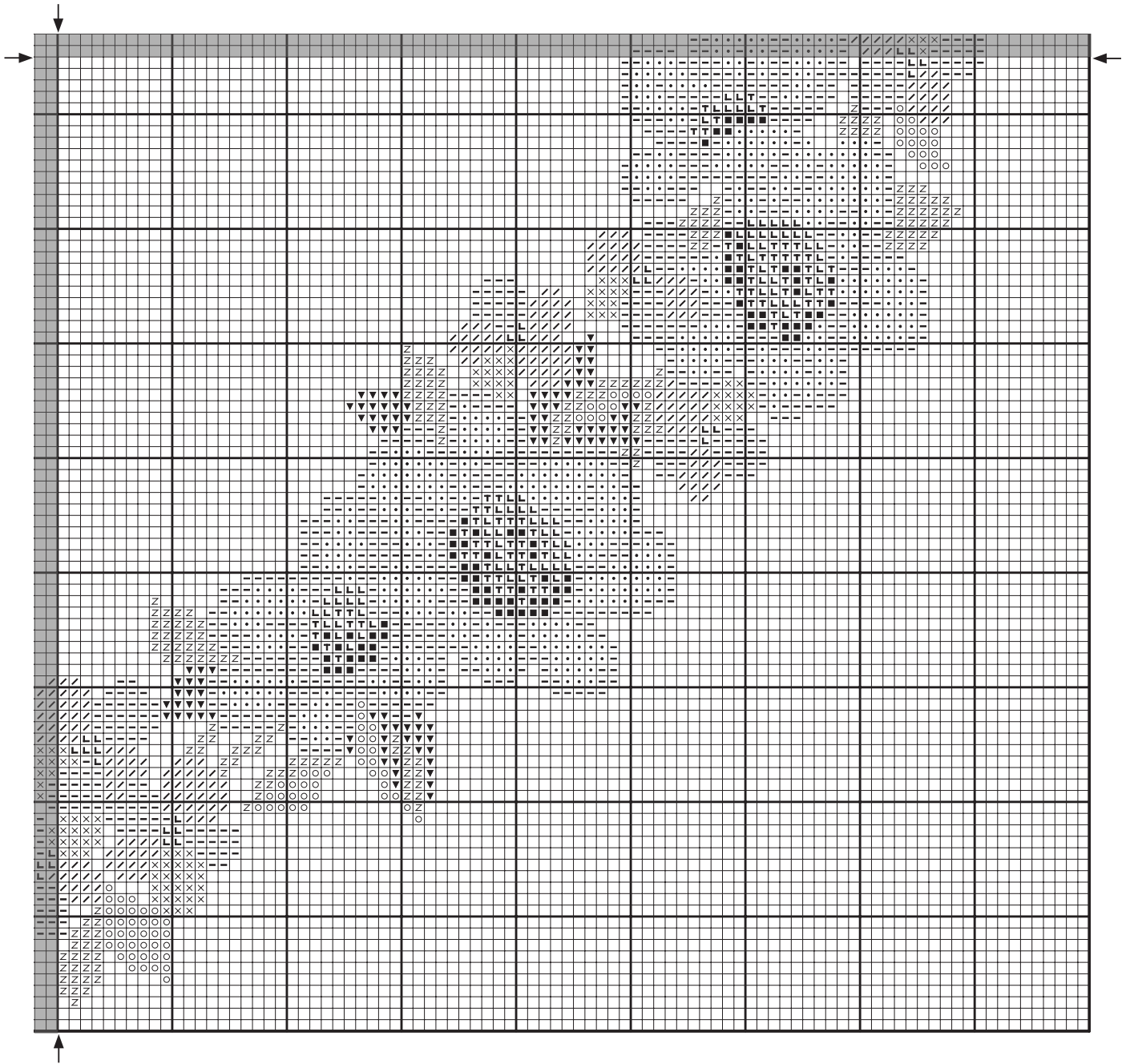
Floral Heart / Coeur floral

Cross Stitch Chart



Floral Heart / Coeur floral

Cross Stitch Chart



Floral Heart / Coeur floral

Getting Started



Tool Kit

DMC Mouliné Special embroidery thread 117MC
 Cross stitch fabric / aida
 Cross stitch needle
 Embroidery hoop (optional)
 Scissors

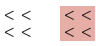






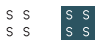


Design size 31 x 33 cm / 12,2 x 13 ”

The size of your design depends on the cross stitch fabric you choose. The higher the fabric's "count" (ie number of cross stitches per inch), the smaller the stitches and therefore your design. We recommend beginners start with 14 count aida (the most common cross stitch fabric), which is what we have based our design size on.

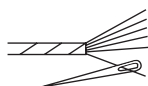
Stitches and Colours You'll Use

Cross Stitch  Use 2 strands 


Mouliné Special Embroidery Thread

Symbol	Colour	N° skeins*	Symbol	Colour	N° skeins*
	225	x 2		3347	x 1
	224	x 1		3345	x 1
	152	x 1		310	x 3
	B5200	x 2		930	x 1
	3348	x 1		336	x 1

Backstitch  Use 1 strand



Mouliné Special Embroidery Thread

Symbol	Colour	N° skeins*
	310	included in cross stitch

* Based on stitching with the number of strands shown above, onto 14 count aida.