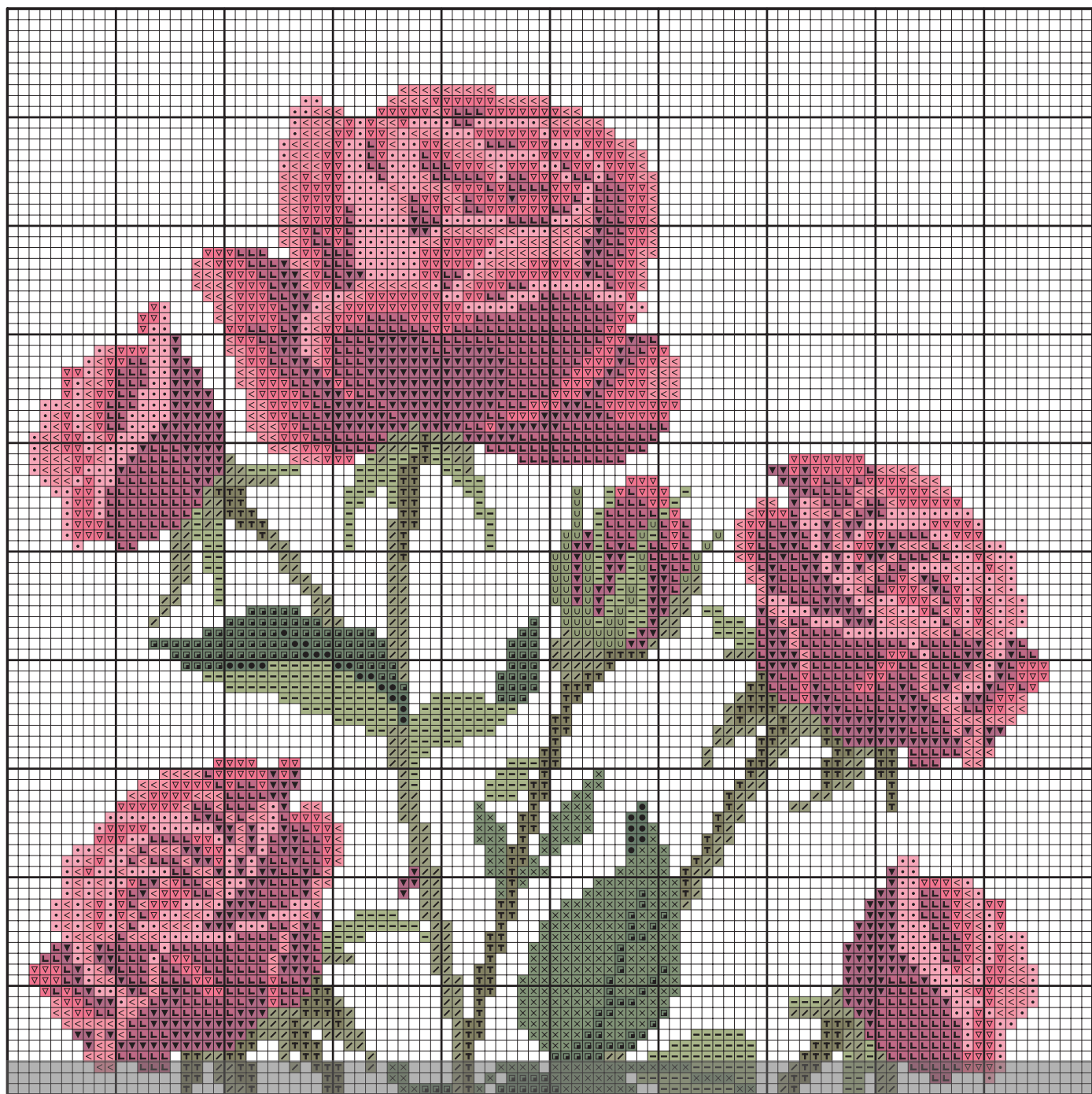




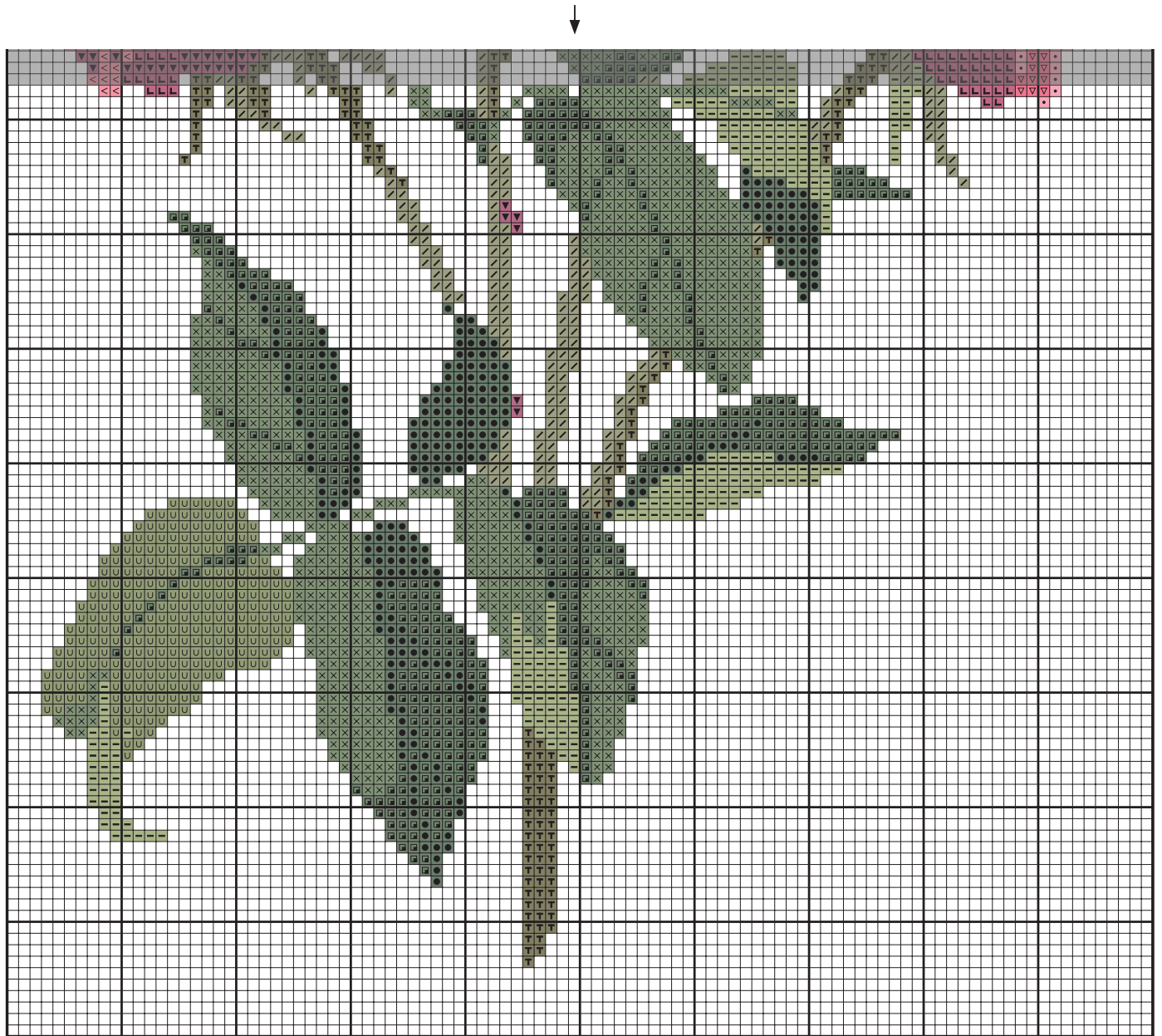
Roses / Roses

Coloured Cross Stitch Chart with Backstitch



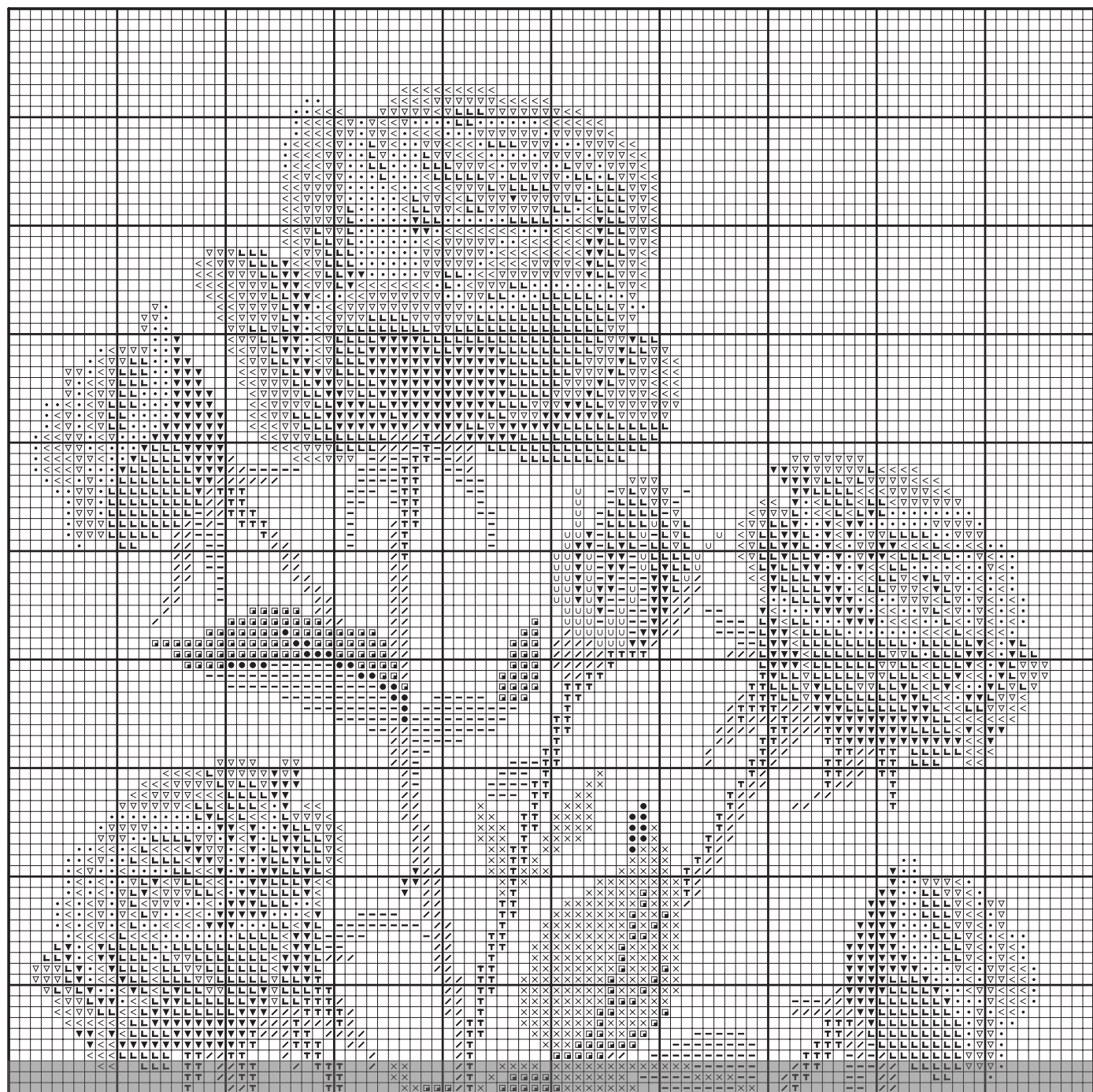
Roses / Roses

Coloured Cross Stitch Chart with Backstitch



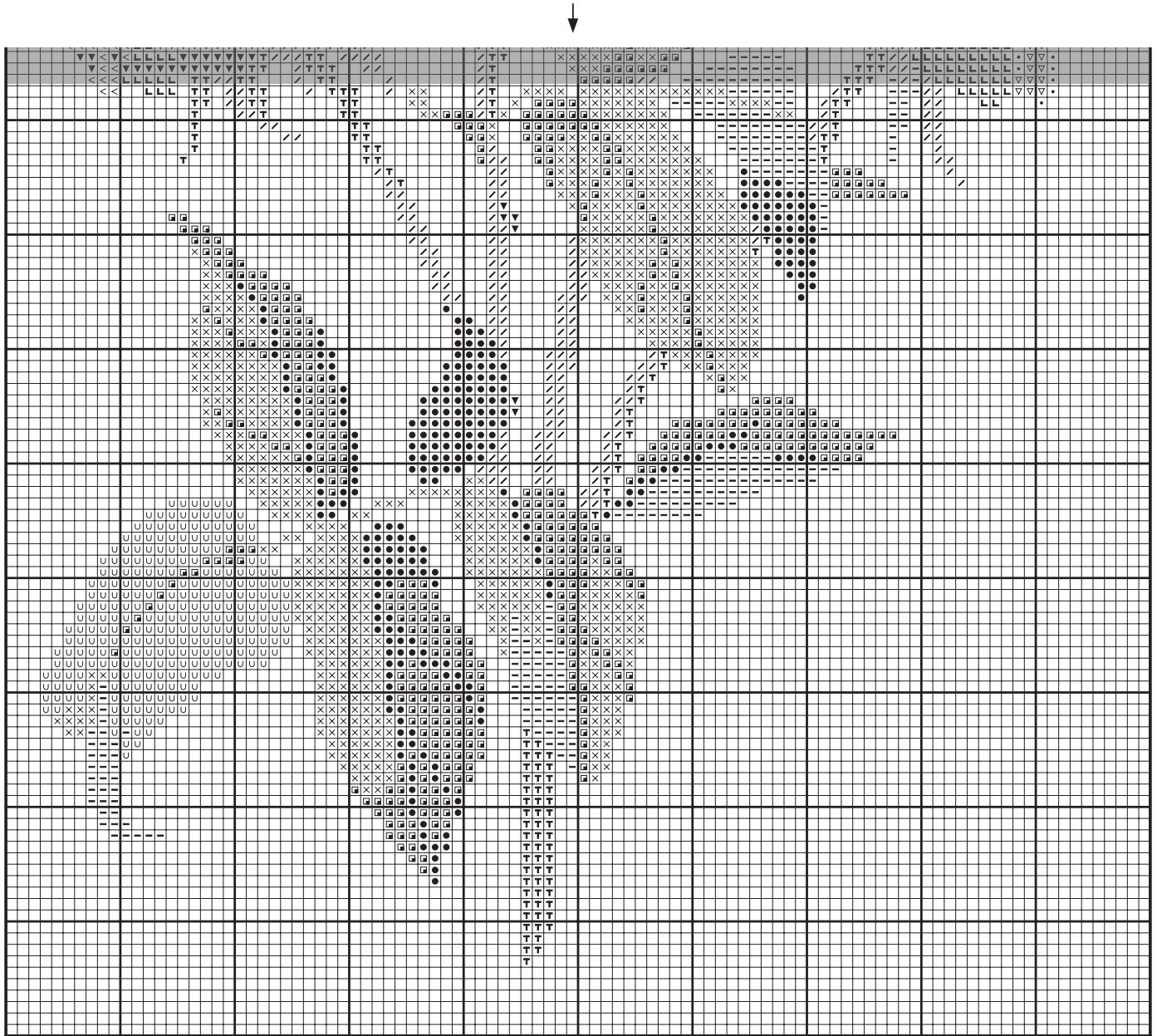
Roses / Roses

Cross Stitch Chart



Roses / Roses

Cross Stitch Chart



Roses / Roses

Getting Started



Tool Kit

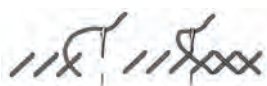
DMC Mouliné Special embroidery thread 117MC
 Cross stitch fabric / aida
 Cross stitch needle
 Embroidery hoop (optional)
 Scissors

Design size 23,5 x 18,5 cm / 9,25 x 7 ”

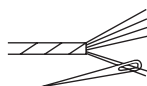
The size of your design depends on the cross stitch fabric you choose. The higher the fabric's "count" (ie number of cross stitches per inch), the smaller the stitches and therefore your design. We recommend beginners start with 14 count aida (the most common cross stitch fabric), which is what we have based our design size on.

Stitches and Colours You'll Use

Cross Stitch



Use 2 strands



Mouliné Special Embroidery Thread

Symbol	Colour	N° skeins*	Symbol	Colour	N° skeins*
••		895 x 1	///		3012 x 1
	3345 x 1	▼▼		816 x 1	
××		3346 x 1	LL		304 x 1
UU		470 x 1	▽▽		891 x 1
--		471 x 1	<<		893 x 1
TT		730 x 1	::		894 x 1

* Based on stitching with the number of strands shown above, onto 14 count aida.