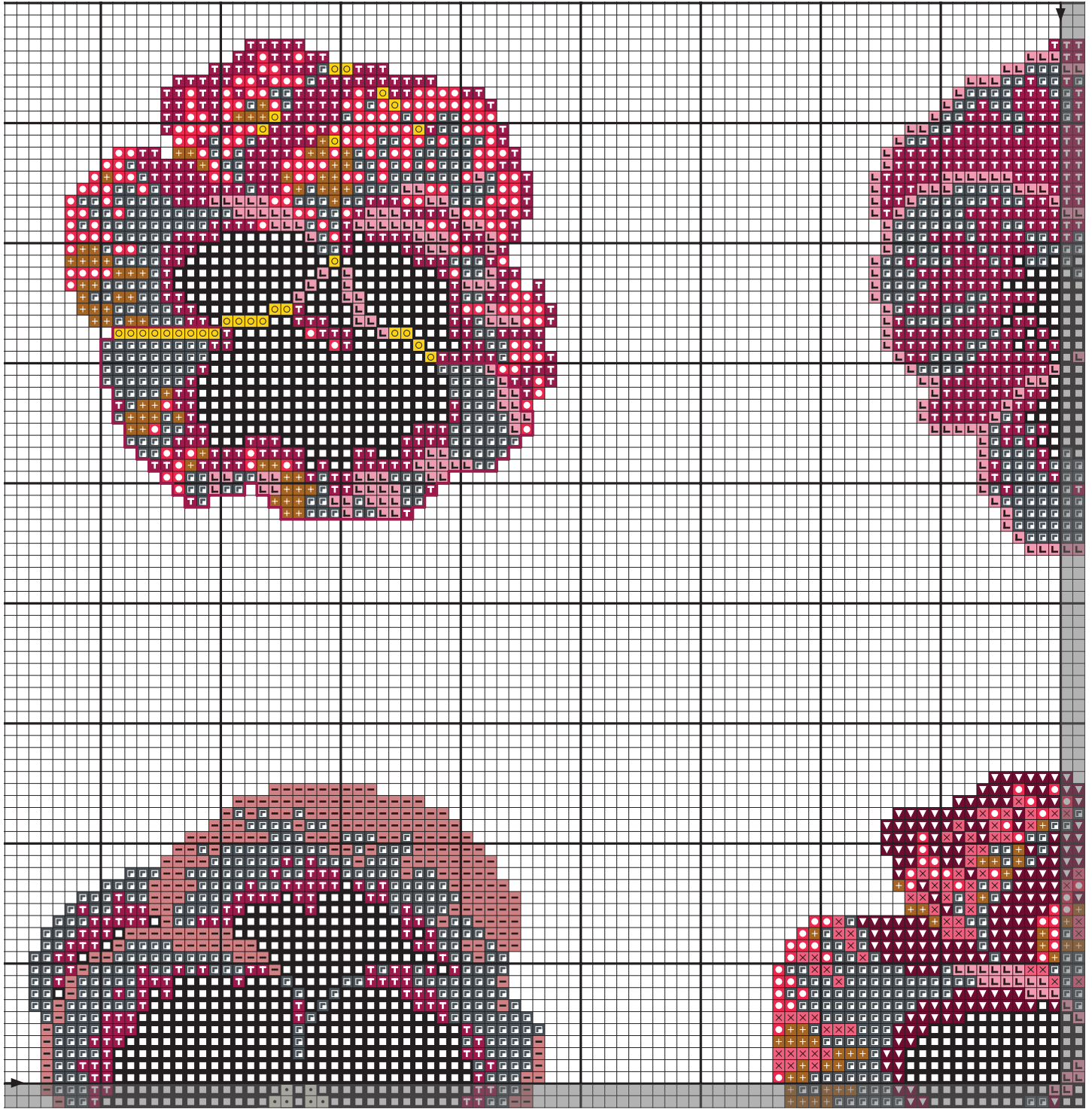


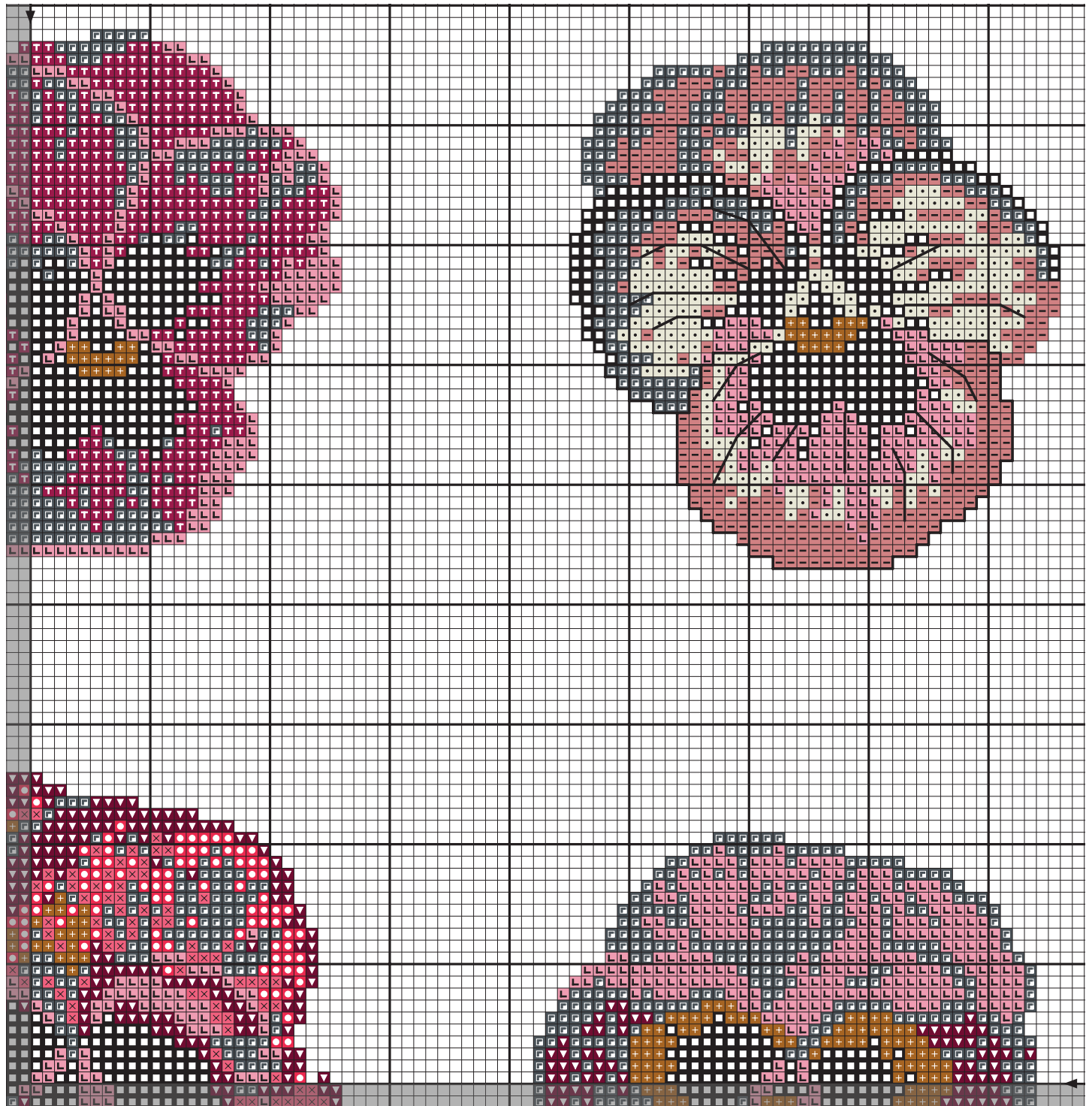
Pansies - Pansy Gang / Pensées

Colour Guide with backstitch / Guide de couleurs avec le point arrière



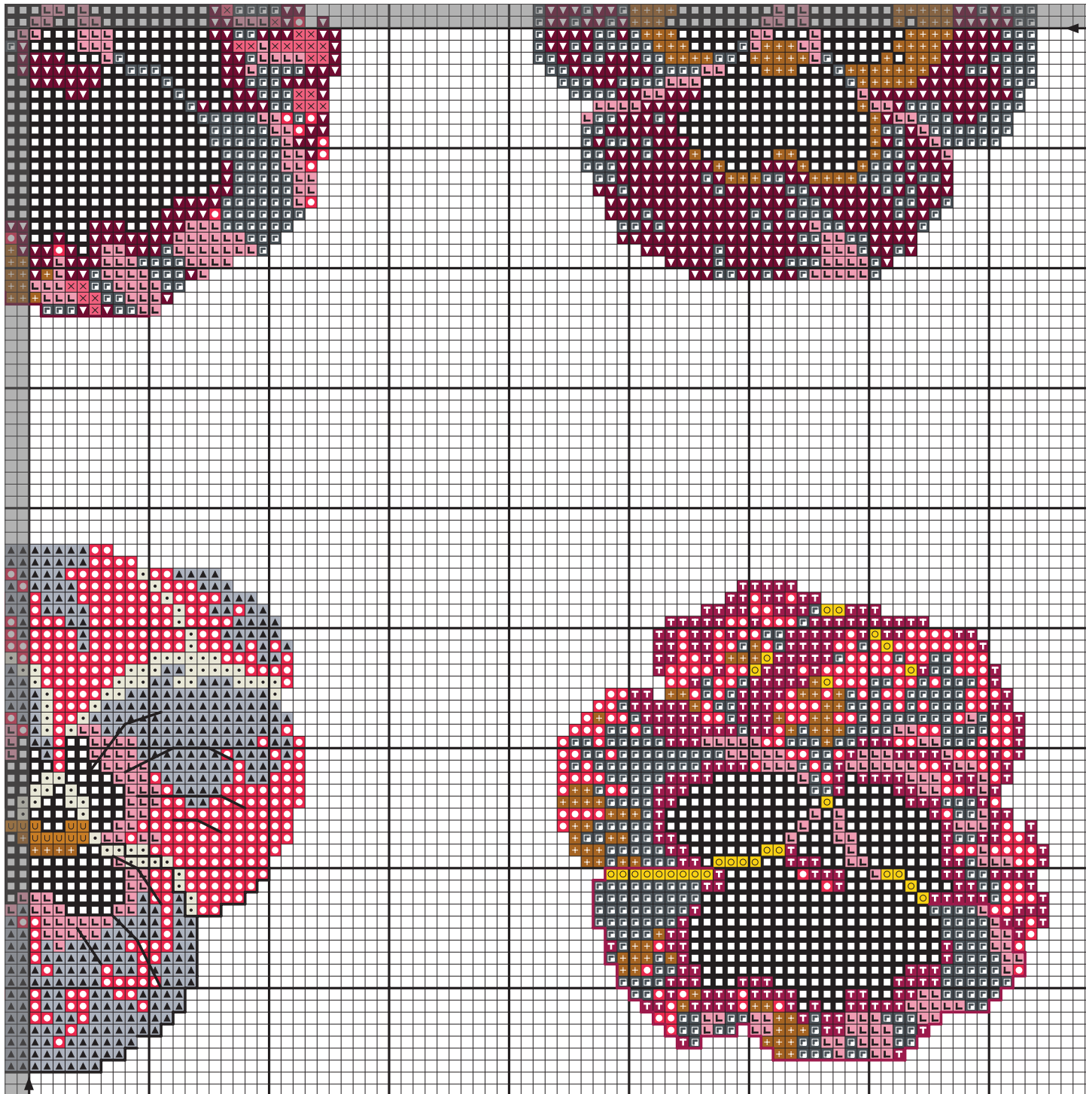
Pansies - Pansy Gang / Pensées

Colour Guide with backstitch / Guide de couleurs avec le point arrière



Pansies - Pansy Gang / Pensées

Colour Guide with backstitch / Guide de couleurs avec le point arrière

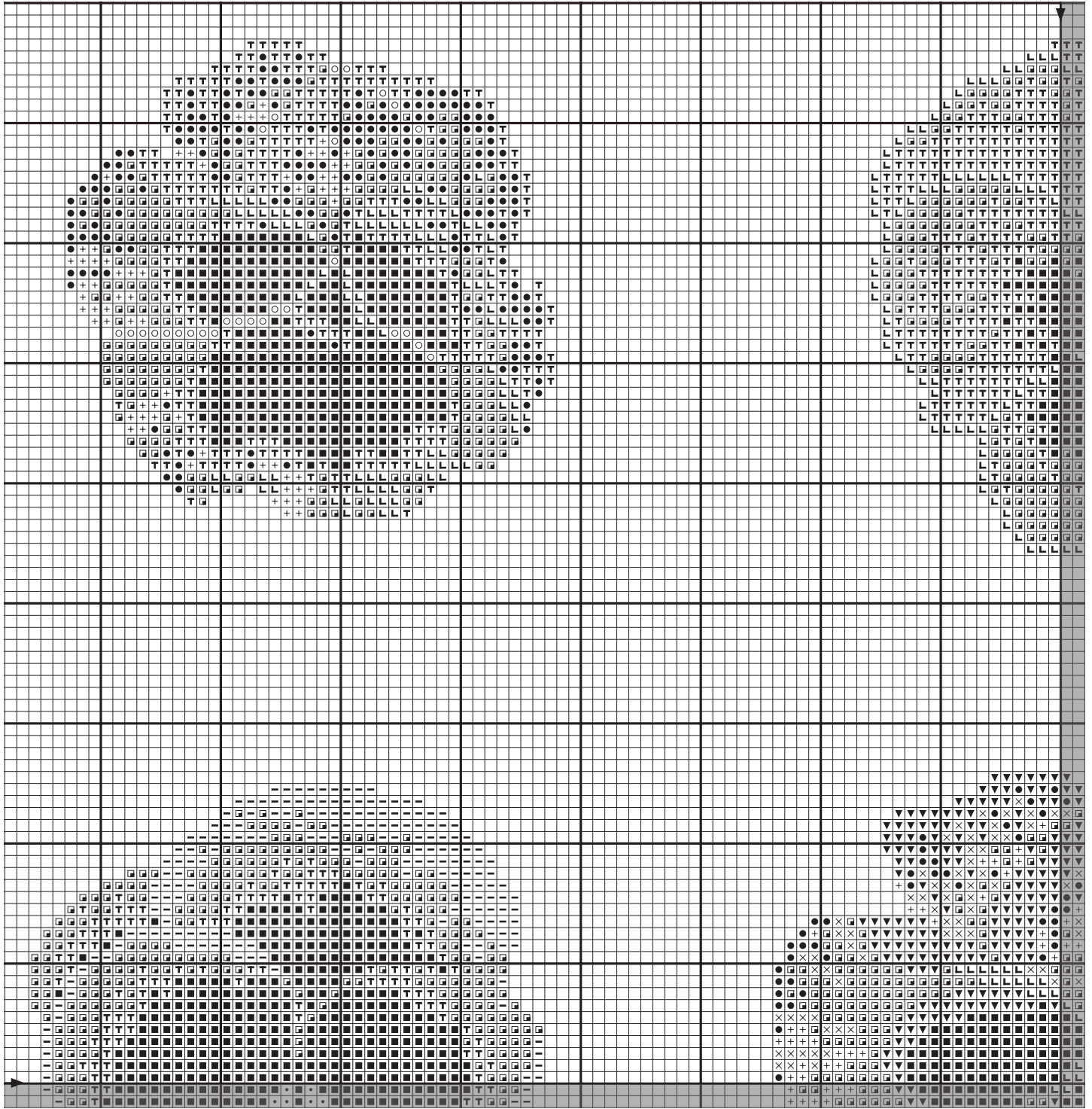


Pansies - Pansy Gang / Pensées

Technical chart without backstitch / Tableau de techniques sans le point arrière



Note: Drawing not to scale / Dessin pas à l'échelle

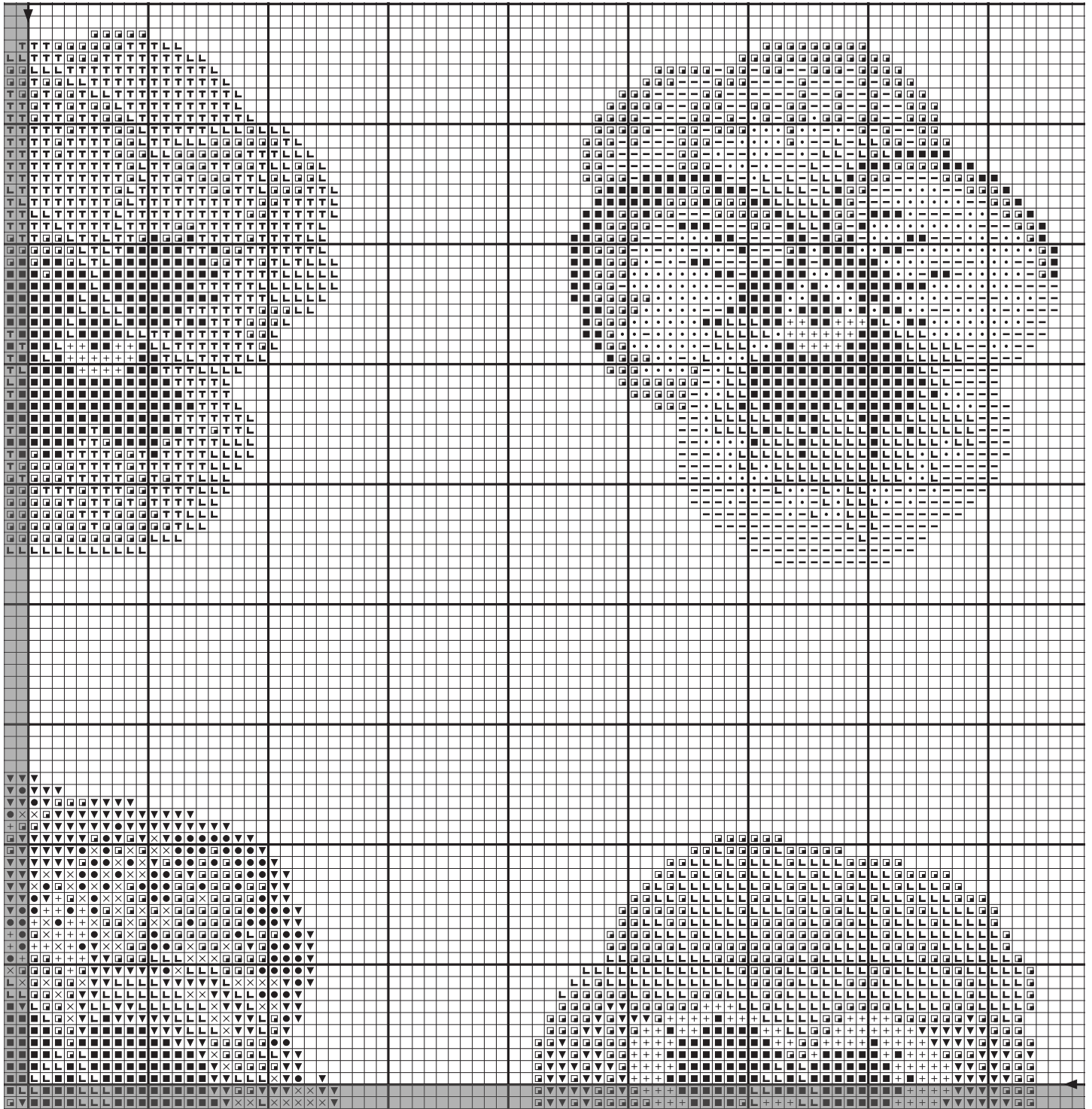


Pansies - Pansy Gang / Pensées

Technical chart without backstitch / Tableau de techniques sans le point arrière



Note: Drawing not to scale / Dessin pas à l'échelle

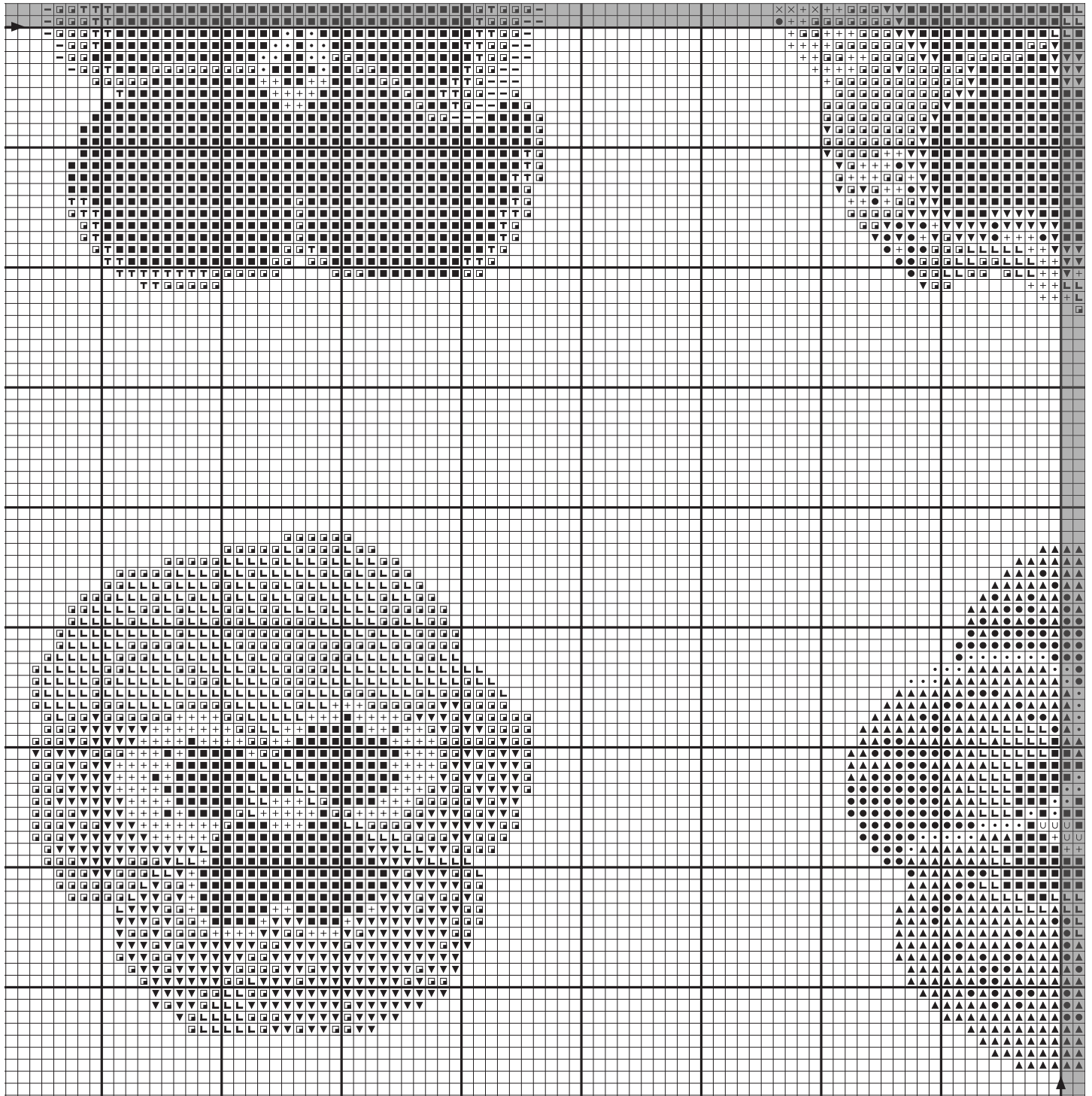


Pansies - Pansy Gang / Pensées

Technical chart without backstitch / Tableau de techniques sans le point arrière



Note: Drawing not to scale / Dessin pas à l'échelle

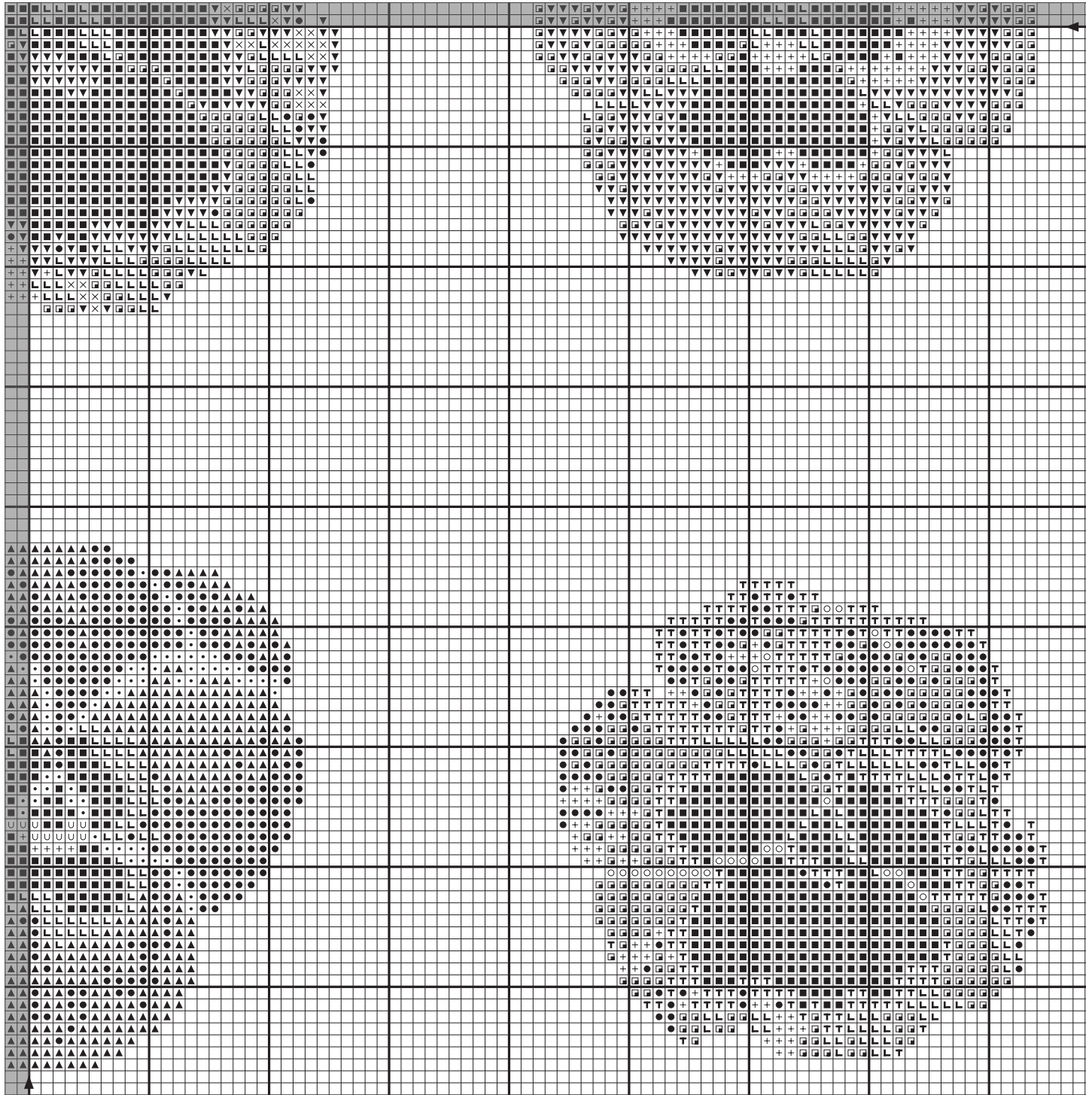


Pansies - Pansy Gang / Pensées

Technical chart without backstitch / Tableau de techniques sans le point arrière



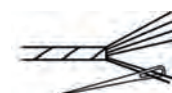
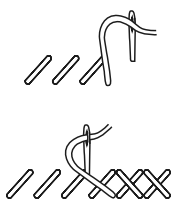
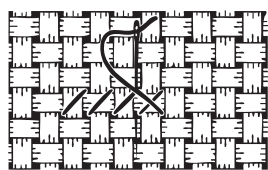
Note: Drawing not to scale / Dessin pas à l'échelle
















Tool Kit / Fournitures

Needle / Aiguille (no.24)
DMC Mouliné Spécial ART 117
Fabric / Toile*

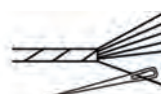
Cross Stitch / Point de Croix





Use 2 strands / Utiliser 2 brins*

Symbol Symbole	Colour Couleur	N° of skeins N° d'échevettes
	413	x 2
	310	x 2
	224	x 1
	151	x 1
	3685	x 1
	782	x 1
	150	x 1
	3705	x 1
	307	x 1
	815	x 1
	899	x 1
	3852	x 1
	415	x 1

Backstitch / Point arrière



Use 1 strand / Utiliser 1 brin*

Symbol Symbole	Colour Couleur	N° of skeins N° d'échevettes
	310	included above inclus ci dessus
	150	included above inclus ci dessus

* Number of strands / skeins based on 28 count linen - Nombre de brins / d'échevettes calculé pour une toile de lin 11 fils/cm
Approx / Environ 33 x 33cm on 28 count / 11 fils/cm